

BNML Photog Group

November 14th, 2023

You can take snaps, and you can create art!

Today's Topics

- Photographers to Follow: Melissa O'Shaunnessy
- The "Nose" Knows
- Intro to Lightroom
- Photographing Birds

Photographers to Follow: Melissa O'Shaunnessy

Viewing the work of talented photographers can help inspire your own photography.

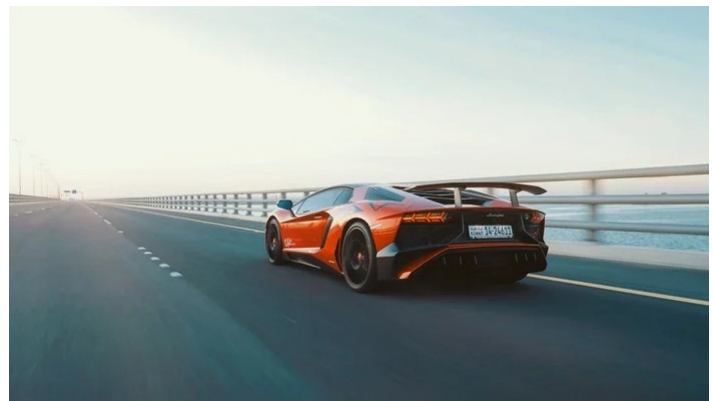
<https://melissaoshaughnessy.com/>



The "Nose" Knows

Nose Room

The importance of leaving "nose room" or "lead room" or "breathing space" -- essentially, negative space in front of a person in the direction they are looking, or the direction a car or animal or person is moving. It allows you to follow the subject's gaze or movement. It's especially useful for moving subjects. It also helps create a context for the viewer, by showing the environment.



source: <https://expertphotography.com/lead-room-principle-photography/>

Good tutorials: <https://filmlifestyle.com/lead-room-in-photography/>

No Nose Room

There are times you deliberately don't leave nose room, in order to create tension or frustration, or just the sense that there is something distressing in some way beyond the frame.

What if the nose is too big/wide?



Sometimes a subject's nose is too big, or too wide, or crooked, or in some way less than flattering. How do you take a photo to reduce its impact?

The most common advice is to use a long lens -- like a 70-200 mm lens -- step back, and zoom in. Make sure the person is facing head on. The telephoto lens "flattens" distance, so the tip of the nose will appear closer to the face than normal. Tilting the head slightly down can also help.

Use soft light, not hard light. A lightly cloudy day vs high noon. Window light can be very soft, or light coming through a lampshade. A flash is usually hard light.

Also, if the person does turn their face, make sure the nose does not pass the edge of the cheek and stick out. No profiles!



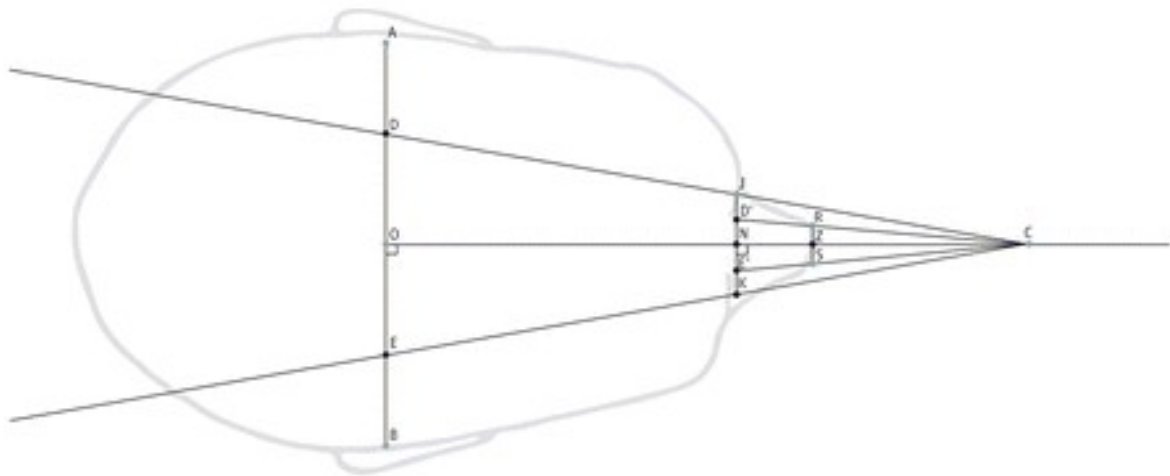
A Portrait at 12 inches



B Portrait at 5 feet (60 inches)

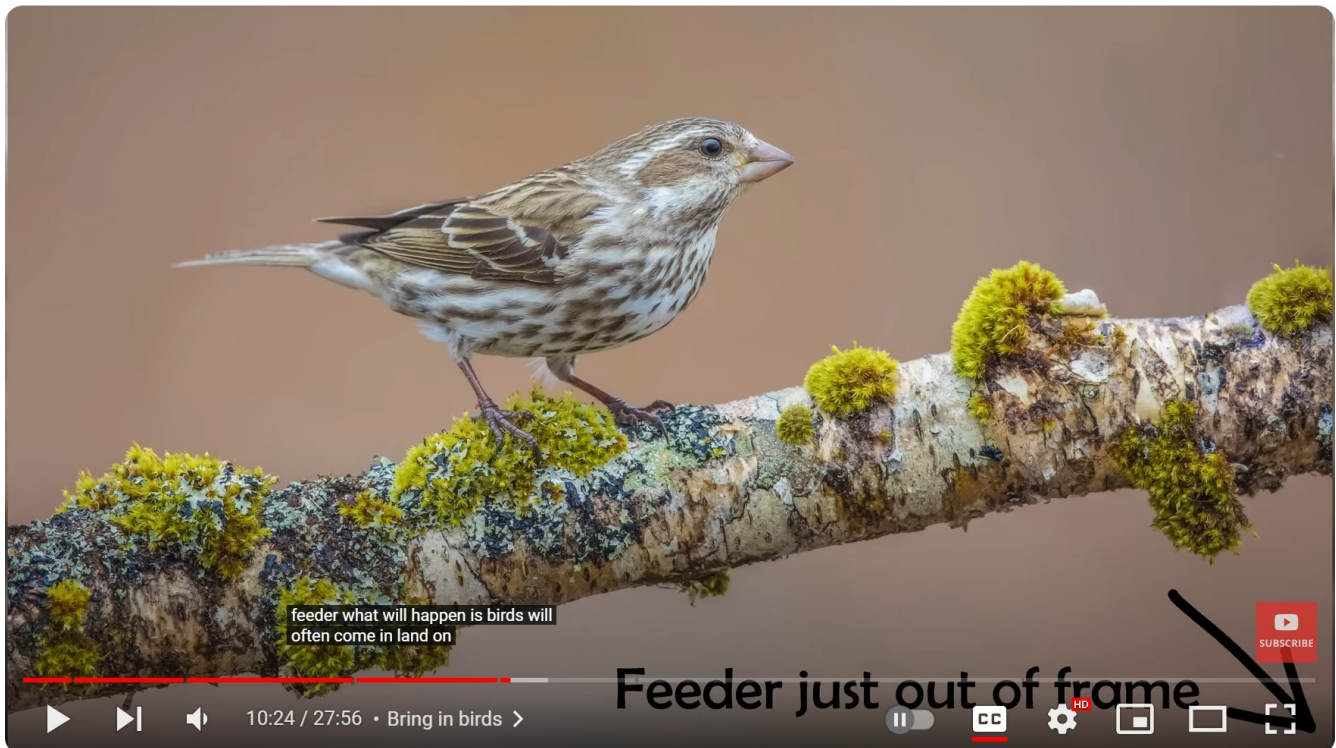


C Calculation of extent of distortion



source: <https://www.liebertpub.com/full/doi/10.1001/jamafacial.2018.0009>

Photographing Birds



From Simon d'Entremont:

Use bird feeders, but set up a decorative branch nearby for birds to use as a perch before they go to the bird feeder. Pick a nice branch with moss and lichen, place it a foot or two from the bird feeder. Birds will often first land on the perch and then hop to the feeder. And when they're done they might hop back to the branch, this time eating a seed. Consider where the light is coming from when placing the branch. Also, look at the background -- you want a clear background that will blur nicely.

Source: <https://www.youtube.com/watch?v=KvIfXkZyPGQ>